



Celebration

designed by Valori Wells

featuring

Blueprint Basics
Valori Wells



Please note: 10 yard bolt put-up with all Blueprint Basics skus

78" x 78"

ROBERTKAUFMAN
F A B R I C S
www.robertkaufman.com

FREE pattern will be available for download
from www.robertkaufman.com in Sept, 2014

Celebration – Materials Needed

1/8 yard each of 16 fabrics
1/4 yard each of 36 fabrics
1 - 2 1/2" x 2 1/2" square for the center

3/4 yard for binding
5 yards for backing
84" x 84" quilt batting

1/8 yard (1 strip of each needed):

Kona K001-1479 Amber
Kona K001-1019 Black
Kona K001-261 Bubble Gum
Kona K001-1056 Buttercup
Kona K001-1301 Purple
Kona K001-7 Tomato
Kona K001-1387 White
AVW-14538-308 Fresh Dew
AVW-14538-321 Sunkissed
AVW-14539-62 Indigo
AVW-14540-21 Lilac
AVW-14540-312 Starry Night
AVW-14540-324 Sundance
AVW-14541-314 Chinese Blue
AVW-14543-310 Leapfrog
AVW-14544-306 Grappa

1/4 yard (3 strips of each needed):

AVW-14538-323 Walnut
AVW-14539-88 Ice
AVW-14541-40 Emerald
AVW-14541-108 Fuchsia
AVW-14542-34 Sage
AVW-14543-168 Cinnamon
AVW-14544-325 Celestial

1/4 yard (2 strips of each needed):

Kona K001-136 Basil
Kona K001-199 Cactus
Kona K001-1083 Coffee
Kona K001-151 Cyan
Kona K001-411 Leprechaun
Kona K001-1239 Mushroom
Kona K001-1265 Orange
Kona K001-1295 Pomegranate
Kona K001-1514 Robin Egg
AVW-14538-295 Iron
AVW-14538-311 Turkish Sea
AVW-14539-70 Aqua
AVW-14539-45 Moss
AVW-14539-318 Pink Nectar
AVW-14540-117 Apple
AVW-14540-185 Steel
AVW-14540-317 Salsa
AVW-14541-184 Charcoal
AVW-14541-309 Bamboo
AVW-14542-155 Stone
AVW-14542-307 Concord Grape
AVW-14542-313 Royal Blue
AVW-14542-322 Orange Spice
AVW-14543-315 Venetian
AVW-14543-316 Coastal Fog
AVW-14543-320 Sangria
AVW-14544-82 Blue Jay
AVW-14544-293 Smoke
AVW-14544-319 Honeysuckle

Celebration

Finished quilt size: 78" x 78"

From Blueprint Basics, designed by Valori Wells for Robert Kaufman Fabrics

Begin your journey with a foundation of color..

Blueprint Basics is a collection of classic modern designs in glorious colors for your adventurous creative pursuits.

BEFORE CUTTING AND SEWING, PLEASE READ ALL INSTRUCTIONS TO FAMILIARIZE YOURSELF WITH THEM.

A 1/4" seam allowance is used throughout.

Cutting Instructions

(all measurements based on accurate cutting, 1/4" seam allowance, and 42" wide strips)

This quilt uses a total of 52 fabrics.

You will need between 1 and 3 - 2 1/2" x 42" strips of each – see quantities below.

For the purposes of this quilt pattern, we are calling the fabrics for each row a "color family," and they are designated on the illustrations as a single color.

Row 1: Kona K001-1387 White 1 strip AVW-14543-316 Coastal Fog. 2 strips AVW-14544-293 Smoke. 2 strips	Row 10: Kona K001-1019 Black 1 strip AVW-14541-184 Charcoal 2 strips AVW-14542-155 Stone 2 strips
Row 2: Kona K001-1056 Buttercup. . . 1 strip AVW-14540-324 Sundance 1 strip AVW-14538-321 Sunkissed 1 strip AVW-14541-309 Bamboo 2 strips	Row 11: AVW-14540-312 Starry Night 1 strip AVW-14538-295 Iron 2 strips AVW-14540-185 Steel 2 strips
Row 3: Kona K001-199 Cactus 2 strips AVW-14538-308 Fresh Dew 1 strip AVW-14540-117 Apple 2 strips	Row 12: AVW-14539-62 Indigo. 1 strip AVW-14544-82 Blue Jay 2 strips AVW-14538-311 Turkish Sea 2 strips
Row 4: Kona K001-1479 Amber 1 strip Kona K001-1265 Orange. 2 strips AVW-14542-322 Orange Spice 2 strips	Row 13: AVW-14541-314 Chinese Blue 1 strip AVW-14542-313 Royal Blue 2 strips AVW-14543-315 Venetian 2 strips
Row 5: Kona K001-7 Tomato 1 strip AVW-14540-317 Salsa 2 strip AVW-14543-320 Sangria 2 strips	Row 14: Kona K001-1514 Robin Egg . 2 strips AVW-14539-88 Ice 3 strips
Row 6: Kona K001-1295 Pomegranate. 2 strips AVW-14541-108 Fuchsia 3 strips	Row 15: AVW-14539-70 Aqua 2 strips AVW-14541-40 Emerald 3 strips
Row 7: Kona K001-261 Bubble Gum . 1 strip AVW-14544-319 Honeysuckle 2 strips AVW-14539-318 Pink Nectar. 2 strips	Row 16: Kona K001-151 Cyan 2 strips AVW-14544-325 Celestial 3 strips
Row 8: Kona K001-1301 Purple 1 strip AVW-14544-306 Grappa 1 strip AVW-14540-21 Lilac 1 strip AVW-14542-307 Concord Grape. 2 strips	Row 17: Kona K001-136 Basil. 2 strips AVW-14542-34 Sage 3 strips
Row 9: Kona K001-1083 Coffee 2 strips AVW-14543-168 Cinnamon. 3 strips	Row 18: Kona K001-411 Leprechaun. . 2 strips AVW-14543-310 Leapfrog. 1 strip AVW-14539-45 Moss. 2 strips
	Row 19: Kona K001-1239 Mushroom . 2 strips AVW-14538-323 Walnut 3 strips
	You will also need: 1 - 2 1/2" x 2 1/2" square of any color you choose for the center

BEFORE CUTTING AND SEWING, PLEASE READ ALL INSTRUCTIONS TO FAMILIARIZE YOURSELF WITH THEM.

A 1/4" seam allowance is used throughout.

Cutting Instructions, continued...

1. From each fabric cut the number of 2 1/2" x 42" strips indicated on the cutting chart.
2. Lay out your strips, putting all the color families for each row together. You should have 5 strips in the same color family for each row. Mix up the colors within their separate rows/color families, i.e. Smoke, Coastal Fog, White, Smoke, Coastal Fog for Row 1. (Refer to cutting chart for color families.)

Quilt Assembly Instructions

The strips will be sewn together in sections.

1. Starting with a strip from the Row 1 stack, and using one fabric from each of the 19 row stacks, lay them out in numerical order, then sew them together. **Figure 1.**

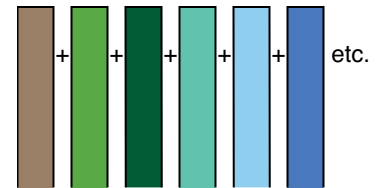


Figure 1

Sewing Hints: To keep the strips from stretching and curving, sew the first two strips together from top to bottom.

Add the third strip, sewing from bottom to top.

Keep alternating directions.

Also, it is much easier to press after each addition of a strip.

Sometimes fabric strips are different lengths--

try to keep the selvages aligned evenly along one edge as you sew.

This will make it easier when you start to cut the rings.

Make sure you like the way the first strip looks with the very last strip, as they are eventually going to be side by side in the quilt.

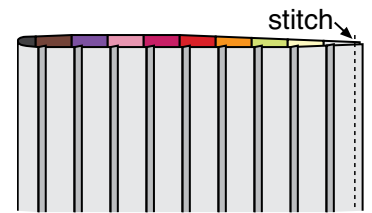


Figure 2

Press the seams in one direction.

Pressing Hint: To encourage the seams to nest together, press all the seams in two of the units in one direction (toward strip #1), and press the seams in the other three units in the opposite direction (toward strip #19).

Make a total of 5 of these units, the same as the first one.

2. Sew the first strip (#1) to the last strip (#19), making a tube. Press. **Figure 2.**

Turn your strip unit so the right side is facing the inside of the tube.

The seams are on the outside.

Lay the tube flat on your cutting mat.

Cut the tube into 2 1/2" wide strips, making sure the fabrics line up on top of each other and they don't pull. Keeping the cutting edge even and cutting carefully, cut a total of 16 rings from each unit. **Figure 3.**

You need a total of 80 rings.

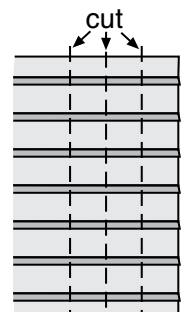
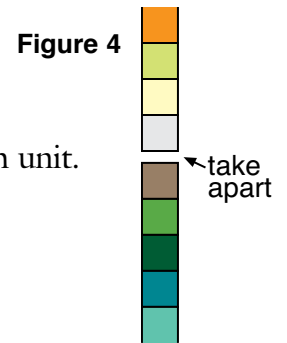


Figure 3

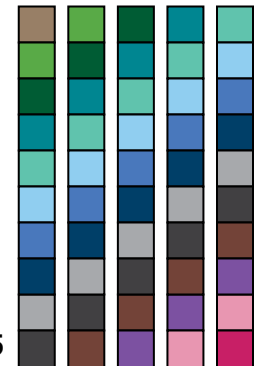
After cutting the rings, you should have enough fabric left in your scraps to cut a 2 1/2" x 2 1/2" square for the center.

3. Arrange one unit at a time on your design wall. You need a total of 19 rings for each unit. Taking one ring, find the fabric you designated as #1, and using your seam ripper, take apart the seam between #1 and #19. **Figure 4.**



Starting in the left-hand corner of your design wall, put the strip on the wall with #1 fabric at the top.

Using another ring, find the #2 fabric, take the seam apart between #1 and #2. Put the strip on your design wall, next to the first one with the #2 fabric at the top. You will be laying out the strips from left to right. **Figure 5.**



As you put the strips on the wall, try to have the first one with the seams pressed toward #1, the second with the seams pressed toward #19, and so on.

Continue this process for the remainder of the strips sewn for this first unit. Put each strip up as the seams are taken apart, creating diagonal rows of color across unit 1. Be sure to **keep them in numerical order** (with #1 at the top, then #2 at the top, #3, and so on).

Figure 5

Sew together in rows, starting with the first two strips and keeping the strips in order. Press.

4. Working one unit at a time, repeat step 3 for each unit.

5. Referring to the quilt illustration, lay out the finished sections. **Figure 6.**

Notice you need one more strip between unit #1 and unit #2 before you join these two units together.

Using one of your leftover rings (you will have four), take the seam apart between fabric #1 and fabric #19.

Sew this between unit #1 and unit #2. Press.

Repeat for units #3 and #4.

6. The remaining two rings will join the top and the bottom sections together. Again, take the seams between #1 and #19 apart in both of the rings.

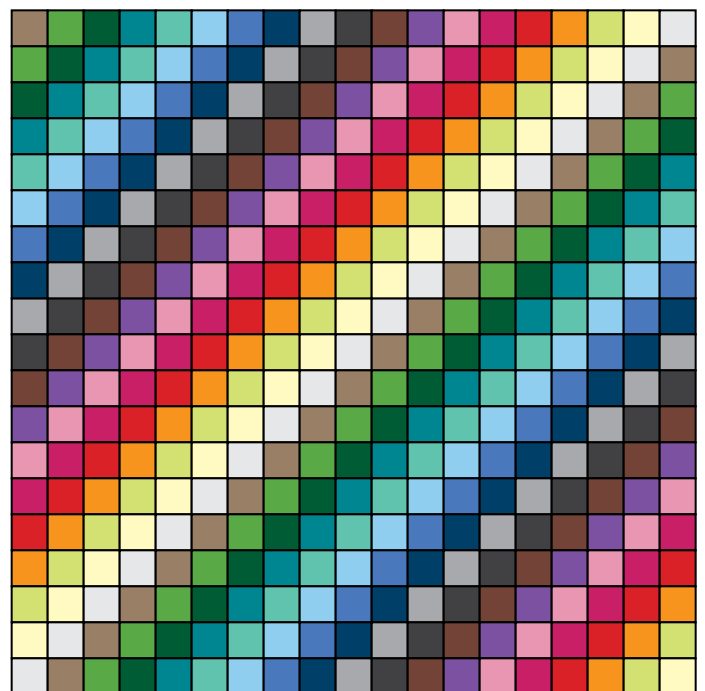


Figure 6

Sew the two rings to the 2 1/2" x 2 1/2" center square, making sure you sew the #19 fabric next to the center square. **Figure 7.**

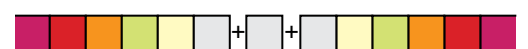


Figure 7

7. Sew the sections together. **Figure 8.** Press.

8. Layer, quilt, and finish the quilt.

I quilted leaves, squiggles, and swirls diagonally around the quilt, following each band of color.

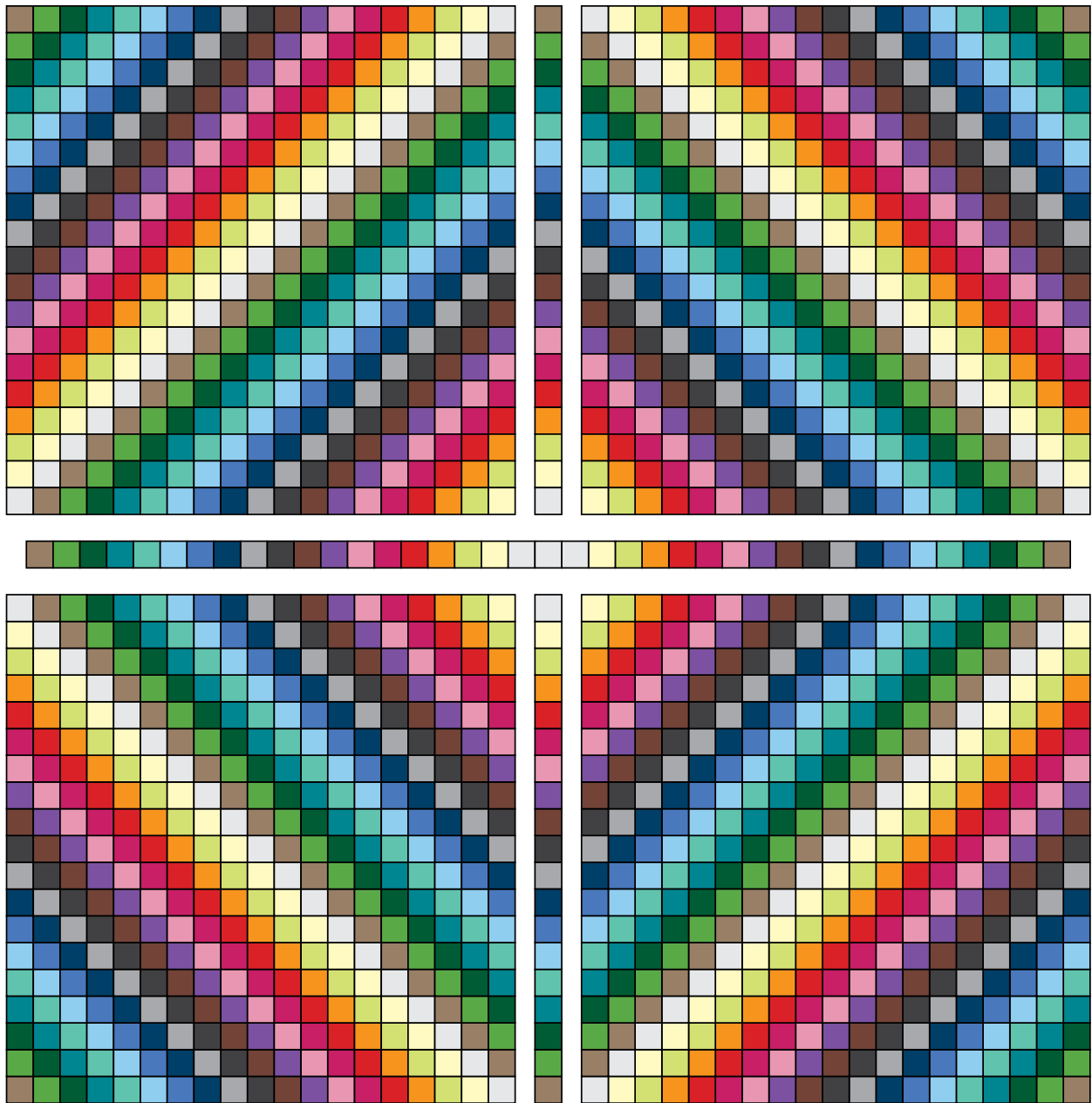


Figure 8 - Quilt Assembly Diagram

Note: Each color family is indicated by a single color on the diagram, even though there are two or three different fabrics in the family.